

Regional Profiles

Latrobe Gippsland

Total Area: 41,289 sq. km **Population:** 300,708 **Working Zones:** Drouin, Warragul and surrounds; La Trobe Valley Orbost and Alps-East; Bairnsdale, Lakes Entrance and surrounds; Leongatha and surrounds; Wonthaggi-Inverloch and Phillip Island; Sale and surrounds; Yarram (maps at end of profile)

Region Selection Rationale

Exposure to decarbonisation	Potential to harness economic opportunities from decarbonisation
<ul style="list-style-type: none"> Carbon intensity: 3 coal-fired power stations, 5 gas-fired power stations and 2 safeguards. As of 2023-24, safeguards in the region account for 37% of Vic safeguard scope 1 emissions; region has large amounts of employment in coal power generation and in manufacturing. Urgency: High – two of three power stations expected to close by 2035. Adaptive capacity: Moderate to above average. Readiness: High - there is already strong planning, funding and preparation for decarbonisation, including development of the Latrobe Valley and Gippsland Transition Plan, designed in conjunction with businesses, industries, and local communities. 	<ul style="list-style-type: none"> Natural capital: High offshore wind potential. Workforce compatibility: Moderate number of workers in the region are in jobs highly compatible with clean energy industries. Compatibility is largely consistent across region. Enabling infrastructure: High – Strong road and telecoms connectivity. Gippsland's proximity to Port of Hastings, a deep-water port allows for hydrogen export.

Carbon-Intensive Industries

Coal Fired Power Stations (CFPS)

Name	Owner	Public closure date (AEMO NEM Gen Apr 2025 ^a)	Supplying Coal Mine	Scope 1 emissions (tCO ₂ -e) (23/24)	% of Scope 1 Vic emissions (23/24)	% of Scope 1 Aus emissions (23/24)
Yallourn Power Station	Energy Australia	2028	Yallourn	10,344,727	20%	3%
Loy Yang Power Station A	AGL	2035	Loy Yang	18,531,075	36%	6%
Loy Yang Power Station B	Alinta Energy	2047	Loy Yang	9,642,473	19%	3%
Total	3	3	2	38,518,275	75%	13% ¹

^a Access may be restricted on a secure network: <https://aemo.com.au/energy-systems/electricity/national-electricity-market-nem/nem-forecasting-and-planning/forecasting-and-planning-data/generation-information>

¹ Values may not add to total due to rounding



Gas Fired Power Stations (GFPS)

Name	Owner	Public closure date (AEMO NEM Gen Apr 2025 ^a)	Scope 1 emissions (tCO ₂ -e) (23/24)	% of Vic scope 1 emissions (23/24)	% of Aus scope 1 emissions (23/24)
Jeeralang A	EnergyAustralia	2039	34,838 (across both facilities)	0.1%	0.01%
Jeeralang B	EnergyAustralia	2039			
Valley Aking/ Power	Snowy Hydro Ltd (Cwth gov.)	2070	17,317	0.03%	0.01%
Bairnsdale	Alinta Energy	2042	33,601	0.1%	0.01%
Longford	Exxon Mobil	2024-2032	n/a	n/a	n/a
Total	5	4	85,756	0.2% ²	0.03%

^a Access may be restricted on a secure network: <https://aemo.com.au/energy-systems/electricity/national-electricity-market-nem/nem-forecasting-and-planning/forecasting-and-planning-data/generation-information>

Manufacturing

Name	Owner	Scope 1 emissions (tCO ₂ -e) (23/24)	% of Vic scope 1 emissions (23/24)	% of Aus scope 1 emissions (23/24)
Opal Australian Paper Maryvale Mill	Paper Australia Ltd	235,738	0.5%	0.1%

Safeguard Facilities (Emit 100,000+ tonnes CO₂ annually - power stations connected to grid are exempt)

Type	No.	Total scope 1 emissions (tCO ₂ -e) (23/24)	% of Vic scope 1 safeguard emissions (23/24)	% of Aus scope 1 safeguard emissions (23/24)
Manufacturing (Opal Australian Paper Maryvale Mill)	1	235,738	5.0%	0.2%
Oil & gas extraction (Gippsland Basin facility)	1	1,505,497	31.9%	1.2%
Total safeguards	2	1,741,235	36.8%	1.4% ³

² Values may not add to total due to rounding
³ Values may not add to total due to rounding



Major Industries

Gross Regional Product (GRP): \$23.3 billion (4.1% of VIC's Gross State Product)⁴

Ranked Industries with most value	Value (m)	% of GRP
Rental, Hiring & Real Estate Services	\$3,165	13.6%
Mining	\$2,460	10.6%
Health Care & Social Assistance	\$2,337	10.0%
Agriculture, Forestry & Fishing	\$2,290	9.8%
Construction	\$2,203	9.5%

Ranked Employing Industries (by usual residence ⁵)	No. of employees (% of workforce)	Ranked Employing Industries (by place of work ⁶)	No. of employees (% of workforce)
Total labour force living in region	127,371 ⁷	Total labour force working in region	113,028 ⁸
Healthcare & Social Assistance	19,698 (16%)	Healthcare & Social Assistance	18,770 (17%)
Retail & Wholesale Trade	14,674 (12%)	Retail & Wholesale Trade	13,490 (12%)
Construction	13,861 (11%)	Education	10,146 (9%)
Education	10,942 (9%)	Construction	9,763 (9%)
Agriculture	9,580 (8%)	Agriculture	9,183 (8%)

4 Data sourced using REMPLAN (incorporating ABS 2021 Census Place of Work Employment (Scaled); 2022 / 2023 National Input Output Tables; June 2024 Gross State Product figures)

5 Data by usual residence means only employees living in Latrobe Gippsland region would be captured (regardless of whether or not they actually work in Latrobe Gippsland).

6 Data by place of work means only employees working in Latrobe Gippsland region would be captured (regardless of whether or not they actually reside in Latrobe Gippsland).

7 Note, for purposes of calculating shares of workforce, total of 122,175 was used (total workforce minus those workers in 'Industry of Employment' categories listed as 'inadequately described' and 'not stated').

8 Note, for purposes of calculating shares of workforce, total of 108,702 was used (total workforce minus those workers in 'Industry of Employment' categories listed as 'inadequately described' and 'not stated').



Major Investments

Clean energy and heavy industry projects (excluding cancelled and completed) (top projects by value)

Project	Description	Category	Status	Value
Gippsland Dawn Offshore Wind Project	Proposed project with up to 2.1 gigawatts of electricity generation capacity. The project would comprise up to 140 offshore wind turbines on fixed foundations, and four offshore substations. Subsea cables will be used to transport the electricity generated to an onshore landing point.	Wind	Announced	\$10 b
Star of the South Offshore Wind Farm	At up to 2.2 GW, project could potentially power around 1.2 million homes. The project is being progressed under a feasibility licence in a 586 square km area, 10 km from the coast at its closest point.	Wind	Feasibility	\$8 b
Wooreen Energy Storage System (WESS)	A four-hour utility-scale battery to store low-cost electricity, such as excess renewable energy, near Yallourn CFPS	Renewable Energy	Under construction	\$800 m
CarbonNet Project	Proposed 100-kilometre pipeline to take liquefied CO2 to a carbon capture storage (CCS) site beneath the seabed.	CCS	Announced	\$150 m



Transmission Infrastructure Projects

AEMO Final 2024 Integrated System Plan transmission infrastructure projects

Name	Description	Status	Timing	Costs
Project Marinus	Two new high voltage direct current cables connecting Vic (inc. Latrobe) and Tas, each with 750 MW of transfer capacity & associated AC transmission, to enable efficient power sharing between regions. HVAC network assets in Tas for REZs under Transmission Developments project.	Actionable	Stage 1 Dec 2030 Stage 2 Dec 2032 (unchanged)	Stage 1: \$3,800 m (±30%). Stage 2: \$2,700 m (±30%).
Eastern Victoria Grid Reinforcement	Add transfer capacity between Latrobe Valley and Melbourne to accommodate increased onshore and new offshore wind power generation.	Future	2030 - 2031	\$297 m (±50%).
Gippsland Offshore Wind Connection	VicGrid is coordinating shared transmission to support offshore wind energy in Vic.	Future	2027-2030	\$700 m - \$1,500 m (overhead) \$2,000 m - \$4,500 m (underground)

Employment

Indicator (2021 Census unless otherwise stated)	Latrobe Gippsland	Victoria
Average working age	42	38
Median income (annual gross, exc. super)	\$26.0K - \$33.8K	\$41.6K - \$52.0K
Participation in workforce	54%	62%
Female participation in workforce	51%	59%
Unemployment rate (Dec 2024)	5.0%	4.5%
Regional Labour Market Index (Dec 2024)	Poor ⁹	N/A

Demographics

Indicator (2021 Census)	Latrobe Gippsland	Victoria
Median age	45	37
First Nations (% of population)	2%	1%
Population growth (2016-2021)	11%	10%
Educational attainment (% of population aged 15 & above): ¹⁰		
• Below Y12	56%	37%
• Y12 or equivalent	44%	63%
• Cert III & IV	24%	15%
• Bachelor and above	17%	32%

Housing

Indicator (2021 Census unless otherwise stated)	Latrobe Gippsland	Victoria
Homelessness ¹¹	0.3%	0.5%
Commonwealth Rent Assistance (Dec 2024) ¹²	6%	5%
Mortgage stress ¹³	12%	15%
Rental stress ¹⁴	34%	31%

⁹ Note, Regional Labour Market Index is calculated by SA4. Score shown reflects Latrobe-Gippsland SA4.

¹⁰ Excludes 'not stated' and categories are not cumulative

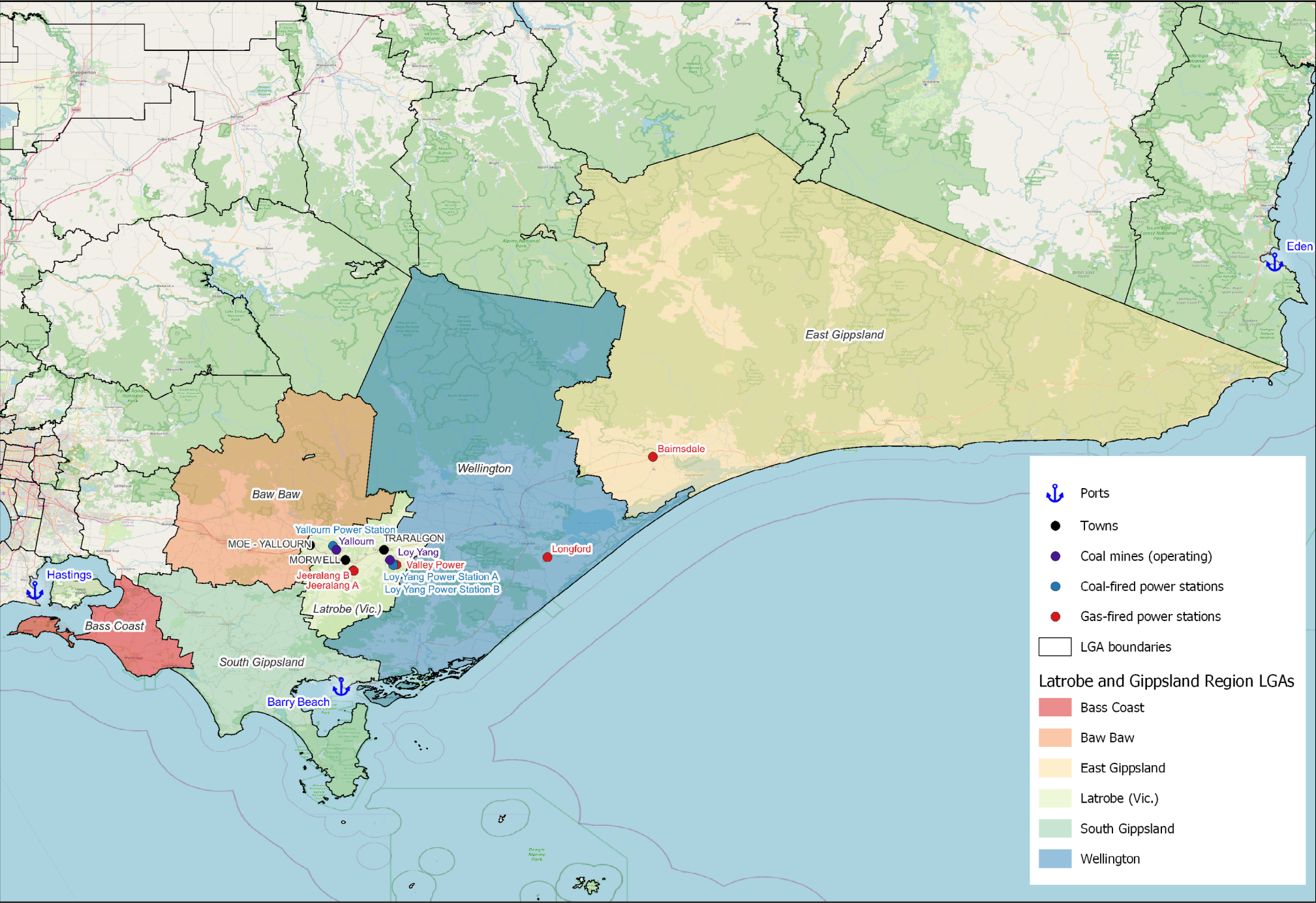
¹¹ Share of population

¹² Share of population

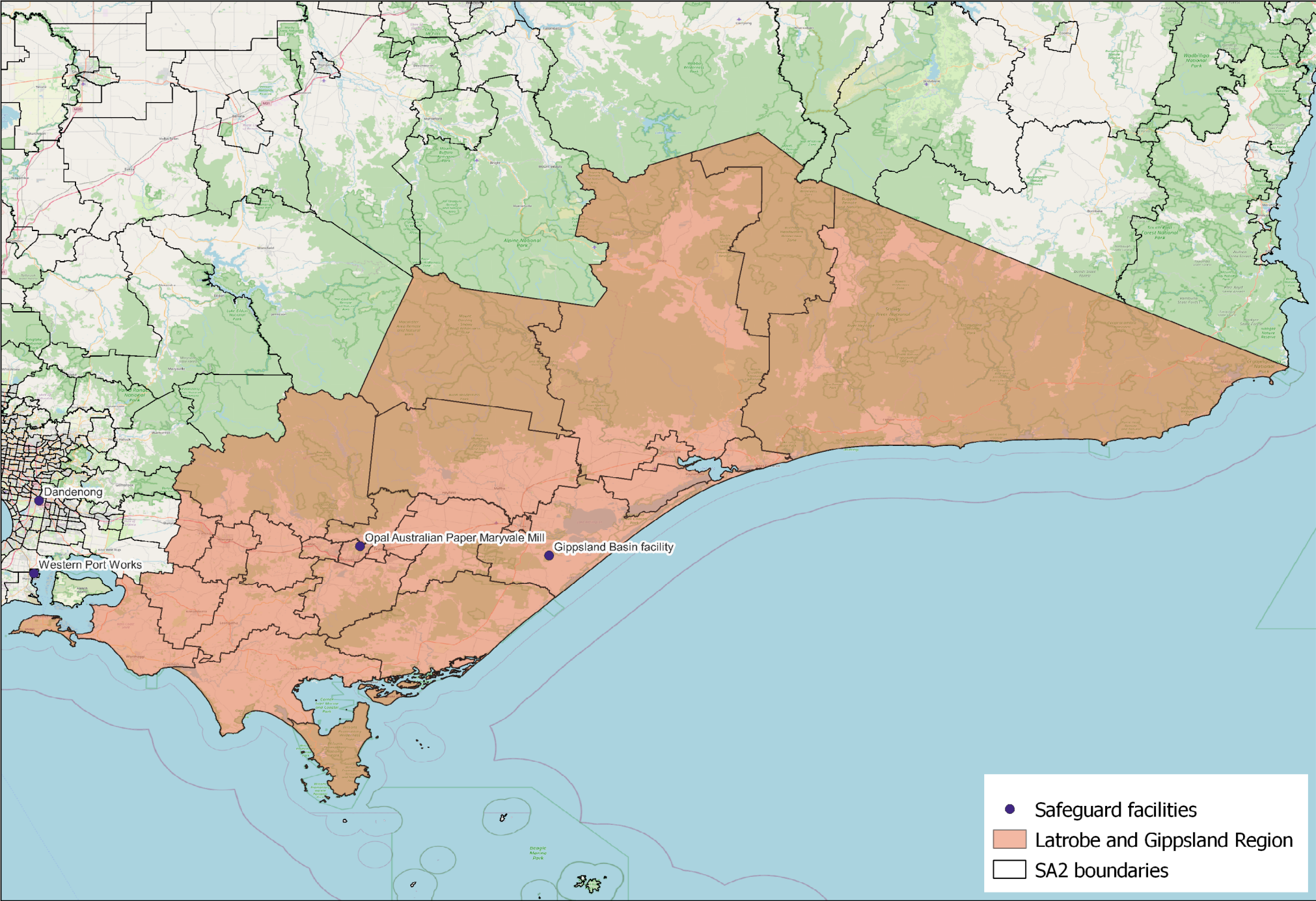
¹³ Share of households where repayments are >30% of household income

¹⁴ Share of households where rent payments are >30% of household income

Map of Region – Power Stations and Mines



Map of Region – Safeguards





Data Sources

Section	Source	Date
Overview		
Total Population	Census , ABS	2021
Area	Mesh Blocks - SA2 Allocation Files , ABS	2021
Priority Region Selection Rationale		
All	Regional identification framework	February 2025
Emissions	Safeguard facilities data , CER	2023-24
Carbon Intensive Industries		
Coal Fired Power Stations	Greenhouse and energy information by designated generation facility , CER (Latrobe-Gippsland) Greenhouse and energy information - published data highlights (VIC)	2023-24
Power station closure dates	NEM Generation Information ^a , AEMO	April 2025
Coal mines	Safeguard facilities data , CER	2023-24
Safeguard facilities	Safeguard facilities data , CER	2023-24
Major Industries		
Ranked industries by most value	Economic data ^b , REMPLAN	2025
Ranked employing industries	Census , ABS	2021
Major Investments		
All	Funded projects , ARENA	2025
	HyResource ^c , CSIRO	2025
	Resources and Energy Major Projects , DISR	2024

a Access may be restricted on a secure network: <https://www.aemo.com.au/energy-systems/electricity/national-electricity-market-nem/nem-forecasting-and-planning/forecasting-and-planning-data/generation-information>

b Access may be restricted on a secure network: <https://www.remplan.com.au>

b Access may be restricted on a secure network: <https://research.csiro.au/hyresource/projects/projects-spreadsheet/>



Section	Source	Date
Transmission Infrastructure Projects		
All	Integrated System Plan^d , AEMO	2024
Employment		
Average working age, median income, labour force participation	Census , ABS	2021
Regional Labour Market Index	Regional Labour Market Indicator , Jobs and Skills Australia	December 2024
Unemployment rate:		
• Latrobe	Small Area Labour Markets , Jobs and Skills Australia	December 2024
• Victoria	Labour Force, Australia , ABS	December 2024
Demographics		
All	Census , ABS	2021
Housing		
Homelessness, mortgage stress, rental stress	Census , ABS	2021
Commonwealth Rental Assistance	Benefit and Payment Recipient Demographics - quarterly data , DSS	December 2024
Maps		
All	Produced using data from Australian Bureau of Agricultural and Resource Economics and Sciences (ABARES) , DAFF	December 2023

Note: All datasets maintained by third party providers listed above and date reflects most recent data available

^d Access may be restricted on a secure network: <https://aemo.com.au/energy-systems/major-publications/integrated-system-plan-isp/2024-integrated-system-plan-isp>